

TECHNICAL MANUAL

**ILLUSTRATED PARTS BREAKDOWN
FOR**

**CIRCUIT CARD ASSEMBLY,
DRUM CONTROLLER, PL-1384/UYQ
PART NUMBER 103945**

This manual contains material reproduced
by permission of GTE/IS. Use, duplication,
or disclosure for use outside the Govern-
ment is not authorized.

HEADQUARTERS, DEPARTMENT OF THE ARMY

NOVEMBER 1979

**HEADQUARTERS
DEPARTMENT OF THE ARMY
Washington, DC, 30 November 1979**

TM 11-7010-200-34P-21, 30 November 1979, is published for the use of all concerned. This manual is a reprint of TO 31S5-4-532-4, 11 March 1978.

By Order of the Secretary of the Army

Official:

**J. C. PENNINGTON
Major General, United States Army
The Adjutant General**

**E. C. MEYER
General, United States Army
Chief of Staff**

DISTRIBUTION:

Active Army

TSG (1)	Army Dep (1) except
USAARENBD (1)	LBAD (10)
USAINSCOM (2)	SAAD (10)
TRADOC (2)	TOAD (14)
DARCOM (1)	SHAD (3)
TECOM (1)	USA Dep (1)
OS Maj Comd (2)	Sig Sec USA Dep (1)
USACC (2)	Units org under iol TOE:
HISA (Ft Monmouth (21)	29-134 (1)
Armies (1)	29-136 (1)
USASIGS (10)	29-207 (2)
Svc Colleges (1)	29-610 (2)
WSMR (1)	Acct # MO497 (2)
USAERDAA (1)	" # DO741 (1)
USAERDAW (1)	" # HO534 (1)
Ft Richardson (CERCOM Ofc) (1)	" # AO049 (1)
Ft Carson (5)	" # SO392 (3)
Ft Gillem (5)	" # JO861 (10)
	" # CO214 (2)

NG: NONE

USAR: NONE

For explanation of abbreviations see, AR 310-50.

ILLUSTRATED PARTS BREAKDOWN TECHNICAL MANUAL
CIRCUIT CARD ASSEMBLY, DRUM CONTROLLER, PL-1384/UFQ

Table of Contents

Section	Page
I	1-1
INTRODUCTION	1-1
1-1 General	1-1
1-2 Scope	1-1
1-3 Group assembly Parts List	1-1
1-3.1 Figure and Index Number Column	1-1
1-3.2 Reference Designation Column	1-2
1-3.3 Locator Column	1-2
1-3.4 Description Column	1-2
1-3.4.1 Indention	1-2
1-3.4.2 Cross Reference	1-2
1-3.5 Part Number Column	1-2
1-3.6 Code Identification Column	1-2
1-3.7 Units Per Assembly Column	1-3
1-3.8 Usable On Code Column	1-3
1-4 Numerical Index	1-3
1-4.1 Part Number Column	1-3
1-4.2 Figure and Index Number Column	1-4
1-4.3 Quantity Per Article	1-4
1-4.4 Source Code Column	1-4
1-4.5 Repair Code Column	1-4
1-5 Reference Designation Index	1-4
1-6 Abbreviations	1-4
1-7 How To Use The Illustrated Parts Breakdown	1-4
II	2-1
GROUP ASSEMBLY PARTS LIST	
III	3-1
NUMERICAL INDEX	
IV	4-1
REFERENCE DESIGNATION INDEX	
List of Illustrations	
Number	Page
1	2-2
2	2-4
3	2-20

Table of Contents (Cont.)

List of Tables

Number	Page
1-1 Manufacture's Code List	1-7

CIRCUIT CARD ASSEMBLY, DRUM CONTROLLER, PL-1384/UYQ
ILLUSTRATED PARTS BREAKDOWN

SECTION I

INTRODUCTION

1-1 GENERAL. This Illustrated Parts Breakdown (IPB) Technical Manual (TM) lists and describes the items necessary for the support of the Circuit Card Assembly, Drum Controller, PL-1384/UYQ, 103945, a separate individual assembly used in conjunction with one or more Automated Communication Terminal configurations of the General Communications Network. The manual is divided into four sections: Section I, Introduction; Section II, Group Assembly Parts List (GAPL); Section III, Numerical Index; and Section IV, Reference Designation Index. It is used for requisitioning, storing, issuing and identifying parts. It is also used to illustrate assembly and disassembly relationships.

1-2 SCOPE This IPB TM reflects the listing of repair parts and/or assemblies. Under certain conditions, when ordering replacement parts, only a complete assembly or subassembly may be obtainable. Although the part or parts necessary are separately listed in the GAPL (Section II), and are under the specific assembly or subassembly, they cannot be obtained alone; i.e., Electrical Power Cable Assembly, Part No. 103207 (in the Expanded Power Supply Chassis - No. 103039-01).

1-3 GROUP ASSEMBLY PARTS LIST. This section contains the complete group assembly parts list separated into figures by main groups, or assemblies, and keyed to the associated illustration by figure and index numbers. The GAPL listing may be arranged in either seven or eight columns: Figure and Index Number; Reference Designation column alone or with a separate Locator column; Description of Item; Part Number; (Manufacturer's) Code Identification Number; Units per Assembly; and Usable on Code column.

1-3.1 Figure and Index Number Column The first item in the figure and index number column is the figure number of the illustration of the assembly listed. The figure number is not repeated thereafter except with the first item of listings continued on succeeding pages. The second number is the index number to key the part to the illustration callout. Identical parts occurring in the same general location on the equipment are illustrated and indexed but once. The relation of each part to its Next Higher Assembly (NHA) or main group is shown either by indention or by figure cross-reference note. However, since certain (particular) illustrations may be delineated by a grid pattern, certain index numbers (callouts) may be used to indicate the location of different components (more than one) within a particular grid subdivision. In other illustrations, multiple use of the same index callout number may be used; these illustrations may not necessarily have a grid pattern incorporated.

1-3.2 Reference Designation Column. This column contains all reference designations used in this IPB and assigned in the unit.

1-3.3 Locator Column.

or figure represents a circuit card or similar assembly which is subdivided by a grid pattern (usually delineated on the card assembly by the manufacturer). The alphanumeric code used in this column delineates the close location of the particular component(s). Where a letter may be absent in the code, this indicates an opted choice on the part of the designer to obviate possible error in identification. When both a letter and number code is absent, or a reference designation (sequential) is missing, this will indicate that either the component is not used or the particular grid space remains devoid of components.

1-3.4 Description Column. The names used are the same as those assigned on the manufacturing drawings or in the Defense Supply Agency Cataloging Handbook H6. Attaching parts are listed immediately below the items to which they attach. The relation of each part to its next higher assembly is either shown by indentation or cross reference. Where a descriptor declares "SAME AS xxx," this indicates that this line item is identical to its first appearance entry in the GAPL.

1-3.4.1 Indentation. Parts listed in this column are indented to indicate item relationship or NHA. The nomenclature of each assembly is followed in the list (except for attaching parts) by the nomenclature of its components indented one column to the right. This indentation indicates the relationship of the component to the assembly. To determine the next higher assembly of a part or assembly, note the column in which the first word of the nomenclature appears. The first item directly above, which appears one column to the left, is the NHA (except for attaching parts).

1-3.4.2 Cross-Reference The notation ("See Fig. for det breakdown") following the description of a part indicates that further breakdown of the part will be shown on the figure noted. The notation ("See Fig. for NH.") following the description of a part indicates that the correct assembly relationship of the part will be shown on the figure and index number noted.

1-3.5 Part Number Column.

1-3.5.1 Part numbers used in this column are selected according to the following order of preference: military standards, design activity numbers and vendor numbers. When a vendor's number is used and an alternate source is known, the alternate vendor and part number is also listed.

1-3.5.2 The part numbers in this manual have been converted by deleting all dashes and spaces between alphabetic and numerical characters. Further, all diagonals (/) denoting fractions in part numbers have been converted to dashes (-) and diagonals between alphabetic and numerical characters have been deleted.

1-3.6 Code Identification Column. The codes listed in this column comprise a five-digit code of the actual manufacturer. This is obtained in accordance with the Federal Supply Code for Manufacturer's Cataloging Handbooks H4-1 and H4-2 and any amendments thereto. Where a coded identification number is NOT

entered, the individual items responsibility remains that of prime contractor 52483, GTE Information Systems. An alpha numerical listing of the applicable manufacturer's codes for this IPB technical manual is included at the end of Section I, see Table 1-1.

1-3.7 Units Per assembly Column. The quantity shown in this column represents the units required for one next higher assembly or subassembly. The notation "REF" (reference) indicates this item has been previously listed under its next higher assembly. The "See Fig" notation in the description of the item will indicate the figure and index number at which the units per assembly can be determined.

1-3.8 Usable on Code Column Usable On Codes shall be employed to indicate specific usability items. The code used will be the same as the revision, i.e., "A" Usable On Code = Revision A, "G1" Usable On Code = Revision G1. The absence of a code indicates that this part is used in all models or revisions covered by this technical manual.

1-4 NUMERICAL INDEX. This section contains an alpha numeric listing of all parts that comprise the article.

1-4.1 Part Number Column. The order of precedence in beginning the part number arrangement on the first (left-hand) position of the part number is as follows:

Letters A through Z

Numerals 0 through 9

The second and succeeding positions of the part number from left to right are as follows:

- a. Space (blank column)
- b. Diagonal (slant)
- c. Point (period)
- d. Dash (-)
- e. Letters A through Z
- f. Numerals 0 through 9

Alphabetic "0's" are considered as numerical "zeros." "No Number" and "Commercial Parts" are listed in alphabetical sequence by the identifying noun in the part number column.

1-4.2 Figure and Index Number Column. The entries in this column provide a cross-reference by means of figure and index numbers to the listing of the part number in Section II (GAPL). The figure and index numbers for government standard and contractor standard hardware are listed showing the first appearance only in Section II.

1-4.3 **Quantity Per Article** The quantity shown in this column is the total quantity required for each article. The abbreviation "REF (reference) indicates that this item has been listed twice in Section II (GAPL), once under its next higher assembly with the total quantity used and once as a referenced item where a detail breakdown is listed.

1-4.4 **Source Code Column** Source codes are entered in the first and second positions of the uniform format and indicate to maintenance and supply personnel the source of acquisition for the item for replacement purposes, i.e. procured, stocked, manufactured, or assembled. Source codes, when and if assigned, are Source, Maintenance and Recoverability Codes assigned in accordance with NAVAIR INST 4423.2.

1-4.5 **Repair Code column.** The use of this column shall remain at the discretion of the prime contractor.

1-5 REFERENCE DESIGNATION INDEX.

1-5.1 **The Reference Designation Index lists the electrical part reference designation numbers (first column) with their corresponding part numbers (third column) in an alphabetical and numerical sequence. This type of sequence differs from the alphanumerical sequence used described in paragraph 1-4.1 for the Numerical Index. This sequence is shown in the following example:**

B1
W1
1A1
3A2R9
3A2R10
3A2R11
etc.

1-5.2 **The figure and index numbers for locating a part in Section II (GAPL) appear opposite each reference designation number (in the second column). The part number remains in its original alphanumeric presentation,**

1-6 **ABBREVIATIONS** Abbreviations used in this manual are in accordance with MIL-STD-12-C.

1-7 HOW TO USE THE ILLUSTRATED PARTS BREAKDOWN

(See following pages)

HOW TO USE THE ILLUSTRATED PARTS BREAKDOWN

SECTION II (Cont)

LANDING GEAR GROUP (Cont)

2-302 Nose Gear Shock Strut Assembly

2-303 Nose Landing Gear Shock Installation

2-304 Nose Landing Gear Wheel Gear and Actuating Mechanism Installation

2-305 Nose Landing Gear Wheel Lock Assembly

2-306 Fuelage Station 99 to 143 Nose Gear Gear Assembly

2-307 Landing Gear Emergency Release Control Installation

2-308 Landing Gear Emergency Release Control Installation (Cont)

2-309 Fuelage Station 99 to 143 Nose Landing Gear Hydraulic Equipment

2-310 Fuelage Station 99 to 143 Nose Landing Gear Hydraulic Equipment (Cont)

2-311 Hydraulic Nose Landing Gear Actuating Cylinder Assembly

2-312 Fuelage Station 143 to 206 Nose Landing Gear Hydraulic Equipment

2-313 Fuelage Station 206 to 254 Landing Gear and Fairing Gear Hydraulic Equipment

2-314 Fuelage Station 254 to 294 Landing Gear and Fairing Gear Hydraulic Equipment

2-315 Hydraulic Landing Gear Wheel Lock Valve Assembly

2-316 Hydraulic Nose Gear Steering Equipment

2-317 Hydraulic Nose Gear Selector Valve Assembly

2-318 Hydraulic Fairing Gear Shuttle Valve and Equipment

2-319 Fuelage Station Landing Gear Hydraulic Equipment

2-320 Hydraulic Run Gear Actuating Cylinder Assembly

2-321 Hydraulic Fairing Gear Actuating Cylinder Assembly

2-322 Fuelage Station 254 and APE Hydraulic Fairing Gear Equipment

2-323 Hydraulic Shock Cylinder and Actuating Equipment

BRACED GROUP

2-324 Pilot - Cockpit Wheel Brake Equipment (Cont)

2-325 Pilot - Cockpit Wheel Brake Equipment (Cont)

2-326 Pilot - Cockpit Wheel Brake Equipment (Cont)

2-327 Pilot - Cockpit Wheel Brake Equipment (Cont)

TABLE OF CONTENTS

Page No.	Page No.
2-302	Fuelage Station 99 to 143 Hydraulic
2-303	Braking Equipment (Cont)
2-304	Hydraulic Run Parking and Power
2-305	Fuelage Station 143 to 206 Hydraulic
2-306	Braking Equipment
2-307	Fuelage Station 206 to 254 Hydraulic
2-308	Braking Equipment
2-309	Fuelage Station 254 to 294 Hydraulic
2-310	Braking Equipment
2-311	Hydraulic Speed Brake Selector Valve
2-312	2-418B
2-313	GENERAL HYDRAULIC GROUP
2-314	Hydraulic Auxiliary Pressure Shut-off
2-315	Valve and Related Equipment
2-316	Fuelage Station 312 Hydraulic Return
2-317	Filter and Equipment (T-384)
2-318	Fuelage Station 312 Hydraulic Utility
2-319	Pressure and General Hydraulic Equipment
2-320	Fuelage Station 206 to 254-1 4 General
2-321	Hydraulic Equipment
2-322	Fuelage Station 254-2 8 and APE Miscellaneous
2-323	General Hydraulic Equipment (T-384)
2-324	Fuelage Station 332-4 8 and APE General
2-325	Hydraulic Equipment (T-384) (Cont)
2-326	Fuelage Station 332-4 8 and APE General
2-327	Hydraulic Equipment (T-384) (Cont)
2-328	Fuelage Station 254-3 8 and APE General
2-329	Hydraulic Equipment (T-384) (Cont)
2-330	Hydraulic General Spring Check Valve
2-331	Assembly
2-332	APE Fuelage Station and Auxiliary
2-333	Hydraulic Accumulators and Related
2-334	Equipment (T-384)
2-335	Fuelage Station 412 Hydraulic Air
2-336	Reservoir, Air Regulator and Filter
2-337	Equipment (T-384)
2-338	Hydraulic Run Pump Assembly (T-384)

WHEN THE PART NUMBER IS NOT KNOWN

- 1 Determine the function and application of the part required. Turn to the Table of Contents and select the appropriate title. Note the illustration page number.
- 2 Turn to the page indicated and locate the desired part on the illustration.
- 3 From the illustration, obtain the index number assigned to the part desired. Refer to the accompanying description for specific information regarding the part.

HOW TO USE THE ILLUSTRATED PARTS BREAKDOWN

SECTION II
PROPELLER ASSEMBLY

SECTION III
GROUP ASSEMBLY INDEX

FIGURE AND INDEX	FIGURE AND INDEX	FIGURE AND INDEX	FIGURE AND INDEX	FIGURE AND INDEX	FIGURE AND INDEX	FIGURE AND INDEX	FIGURE AND INDEX
70000-1	70000-2	70000-3	70000-4	70000-5	70000-6	70000-7	70000-8
70000-9	70000-10	70000-11	70000-12	70000-13	70000-14	70000-15	70000-16
70000-17	70000-18	70000-19	70000-20	70000-21	70000-22	70000-23	70000-24
70000-25	70000-26	70000-27	70000-28	70000-29	70000-30	70000-31	70000-32
70000-33	70000-34	70000-35	70000-36	70000-37	70000-38	70000-39	70000-40
70000-41	70000-42	70000-43	70000-44	70000-45	70000-46	70000-47	70000-48
70000-49	70000-50	70000-51	70000-52	70000-53	70000-54	70000-55	70000-56
70000-57	70000-58	70000-59	70000-60	70000-61	70000-62	70000-63	70000-64
70000-65	70000-66	70000-67	70000-68	70000-69	70000-70	70000-71	70000-72
70000-73	70000-74	70000-75	70000-76	70000-77	70000-78	70000-79	70000-80
70000-81	70000-82	70000-83	70000-84	70000-85	70000-86	70000-87	70000-88
70000-89	70000-90	70000-91	70000-92	70000-93	70000-94	70000-95	70000-96
70000-97	70000-98	70000-99	70000-100	70000-101	70000-102	70000-103	70000-104
70000-105	70000-106	70000-107	70000-108	70000-109	70000-110	70000-111	70000-112
70000-113	70000-114	70000-115	70000-116	70000-117	70000-118	70000-119	70000-120
70000-121	70000-122	70000-123	70000-124	70000-125	70000-126	70000-127	70000-128
70000-129	70000-130	70000-131	70000-132	70000-133	70000-134	70000-135	70000-136
70000-137	70000-138	70000-139	70000-140	70000-141	70000-142	70000-143	70000-144
70000-145	70000-146	70000-147	70000-148	70000-149	70000-150	70000-151	70000-152
70000-153	70000-154	70000-155	70000-156	70000-157	70000-158	70000-159	70000-160
70000-161	70000-162	70000-163	70000-164	70000-165	70000-166	70000-167	70000-168
70000-169	70000-170	70000-171	70000-172	70000-173	70000-174	70000-175	70000-176
70000-177	70000-178	70000-179	70000-180	70000-181	70000-182	70000-183	70000-184
70000-185	70000-186	70000-187	70000-188	70000-189	70000-190	70000-191	70000-192
70000-193	70000-194	70000-195	70000-196	70000-197	70000-198	70000-199	70000-200

SECTION IV
REFERENCE DESIGNATION INDEX

FIGURE AND INDEX	FIGURE AND INDEX	FIGURE AND INDEX	FIGURE AND INDEX	FIGURE AND INDEX	FIGURE AND INDEX	FIGURE AND INDEX	FIGURE AND INDEX
70000-1	70000-2	70000-3	70000-4	70000-5	70000-6	70000-7	70000-8
70000-9	70000-10	70000-11	70000-12	70000-13	70000-14	70000-15	70000-16
70000-17	70000-18	70000-19	70000-20	70000-21	70000-22	70000-23	70000-24
70000-25	70000-26	70000-27	70000-28	70000-29	70000-30	70000-31	70000-32
70000-33	70000-34	70000-35	70000-36	70000-37	70000-38	70000-39	70000-40
70000-41	70000-42	70000-43	70000-44	70000-45	70000-46	70000-47	70000-48
70000-49	70000-50	70000-51	70000-52	70000-53	70000-54	70000-55	70000-56
70000-57	70000-58	70000-59	70000-60	70000-61	70000-62	70000-63	70000-64
70000-65	70000-66	70000-67	70000-68	70000-69	70000-70	70000-71	70000-72
70000-73	70000-74	70000-75	70000-76	70000-77	70000-78	70000-79	70000-80
70000-81	70000-82	70000-83	70000-84	70000-85	70000-86	70000-87	70000-88
70000-89	70000-90	70000-91	70000-92	70000-93	70000-94	70000-95	70000-96
70000-97	70000-98	70000-99	70000-100	70000-101	70000-102	70000-103	70000-104
70000-105	70000-106	70000-107	70000-108	70000-109	70000-110	70000-111	70000-112
70000-113	70000-114	70000-115	70000-116	70000-117	70000-118	70000-119	70000-120
70000-121	70000-122	70000-123	70000-124	70000-125	70000-126	70000-127	70000-128
70000-129	70000-130	70000-131	70000-132	70000-133	70000-134	70000-135	70000-136
70000-137	70000-138	70000-139	70000-140	70000-141	70000-142	70000-143	70000-144
70000-145	70000-146	70000-147	70000-148	70000-149	70000-150	70000-151	70000-152
70000-153	70000-154	70000-155	70000-156	70000-157	70000-158	70000-159	70000-160
70000-161	70000-162	70000-163	70000-164	70000-165	70000-166	70000-167	70000-168
70000-169	70000-170	70000-171	70000-172	70000-173	70000-174	70000-175	70000-176
70000-177	70000-178	70000-179	70000-180	70000-181	70000-182	70000-183	70000-184
70000-185	70000-186	70000-187	70000-188	70000-189	70000-190	70000-191	70000-192
70000-193	70000-194	70000-195	70000-196	70000-197	70000-198	70000-199	70000-200

WHEN THE PART NUMBER OR REFERENCE DESIGNATION IS KNOWN

- 1** When the part number is known, refer to Section III Numerical Index. Locate the part number and note the figure and index number assigned to the part number.
- 2** Turn to the figure number indicated and locate the index number referenced in the Numerical Index.
- 3** If a pictorial representation of the part, or its location is desired, refer to the same index number on the accompanying illustration.
- 4** When the reference designation is known, refer to Section IV Reference Designation Index. Locate the reference designation and note the figure and index number and the part number assigned.
- 5** Turn to the figure indicated and locate the index number referenced in the Reference Designation Index.
- 6** If a pictorial representation of the part, or its location is desired, refer to the same index number on the accompanying illustration.

TABLE 1-1. MANUFACTURES' CODE LIST

CODE	MANUFACTURERS NAME AND ADDRESS
06540	Texas Instruments, Inc. Components Group P. O. Box 5012 Dallas, Texas 75222
07707	Anatom Electronic Hardware Division of MITE Corporation New Rochelle, New York 10802
14655	USM Corporation USM Fastener Division 510 River Road Shelton, Connecticut 06484
26066	Cornell-Dubillier Electronics Division of Federal Pacific Electronic Co. Government Contracts Department 150 Avenue "L" Newark, New Jersey 07105
32298	Minnesota Mining and Manufacturing Co. 3M Center St. Paul, Minnesota 55101
33809	Doran Manufacturing Co. 5151 West 65th Street Chicago, Illinois 60638
52483	Texas Instruments Inc. P. O. Box 5012 13500 N. Central Expressway Dallas, Texas 75222
72136	GTE Information Systems 5300 La Palma Avenue (East) Anaheim, California 92806
72982	Electro Motive Manufacturing Co., Inc. South Park and John Streets Williamantic, Connecticut 06226
73803	Erie Technological Products, Inc. 644 West 12th Street Erie, Pennsylvania 16512
	Texas Instruments Inc. Metallurgical Materials Division Attleboro, Maine 02703

TABLE 1-1. MANUFACTURES' CODE LIST

CODE	MANUFACTURERS NAME AND ADDRESS
75037	Minnesota Mining and Manufacturing Co. Electro Products Division 3M Center St. Paul, Minnesota 55101
81349	Military Specifications
86928	Seastrom Manufacturing Company, Inc. 701 Sonora Avenue Glendale, California 91201
91506	Augat Inc. 33 Perry Avenue Attleboro, Maine 02703
94961	Minnesota Mining and Manufacturing Co. Magnetic Products Division 3M Center St. Paul, Minnesota 55101
96906	Military Specifications

SECTION II
GROUP ASSEMBLY PARTS LIST

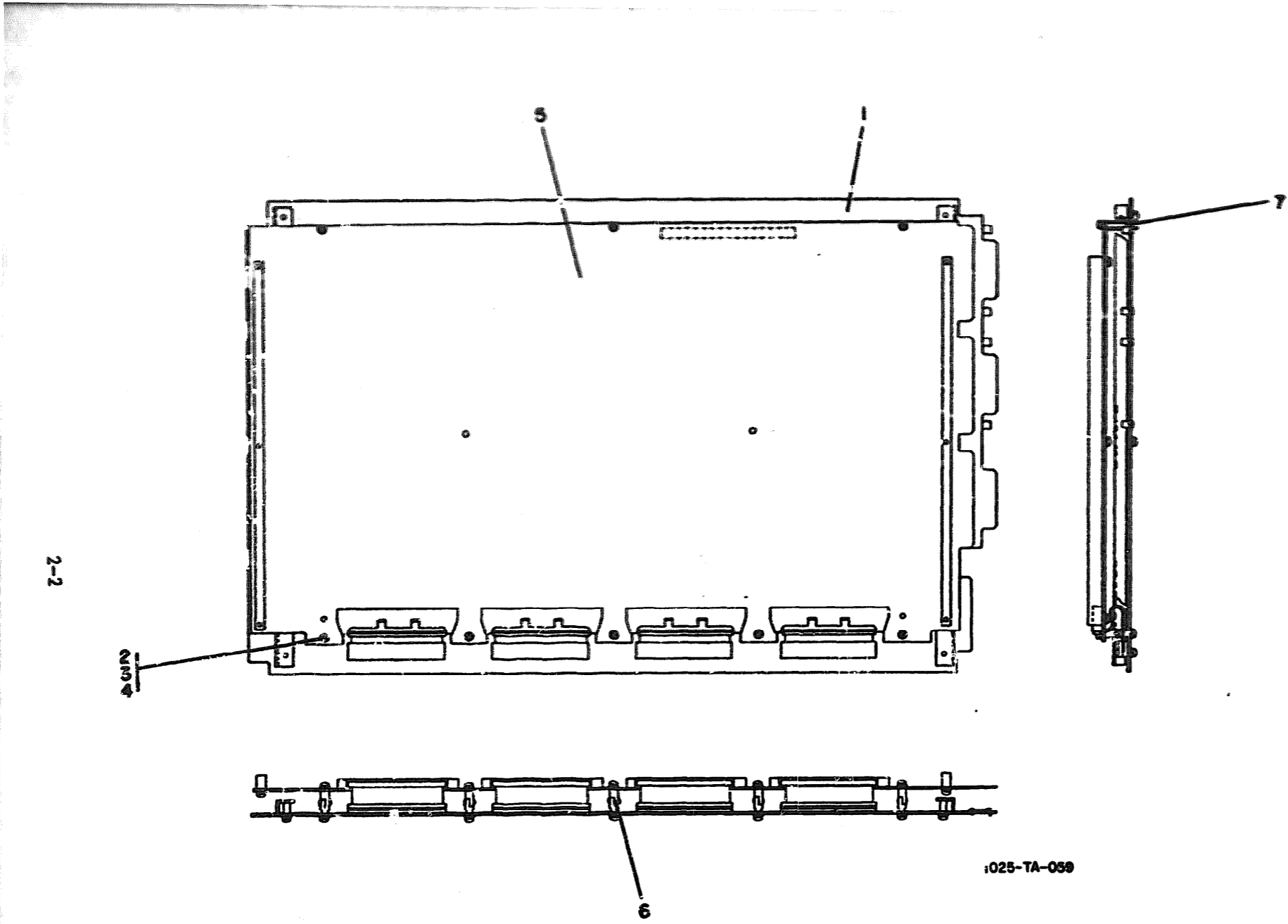


Figure 1. Circuit Card Assembly, Drum Controller

GROUP ASSEMBLY PARTS LIST

Figure
& Index
No.

1

- 1

- 2

- 3

- 4

- 5

- 6

- 7

Ref. Des.	Locator	Description	Part Number	Code Ident	Units Per Assy	Usable on Code
		CIRCUIT CARD ASSEMBLY, DRUM CONTROLLER	103945		1	
A1		. CIRCUIT CARD ASSEMBLY #1 (SEE FIGURE 2 FOR BREAKDOWN)	103946		1	
		(ATTACHING PARTS)				
		. SCREW, MACHINE	MS51957-14	96906	8	
		. WASHER, FLAT	MS15795-804	96906	8	
		. WASHER, LOCK	MS35338-135	96906	8	
		-----*				
A2		. CIRCUIT CARD ASSEMBLY #2 (SEE FIGURE 3 FOR BREAK- DOWN)	103948		1	
		(ATTACHING PARTS)				
		. SCREW, MACHINE	MS51957-14	96906	8	
		. WASHER, FLAT	MS15795-804	96906	8	
		. WASHER, LOCK	MS35338-135	96906	8	
		-----*				
		. STANDOFF, HINGED	HS2033	32298	5	
		. SPACER 4-40 3/16 x 5/8 L	8108B0440-3	06540	3	

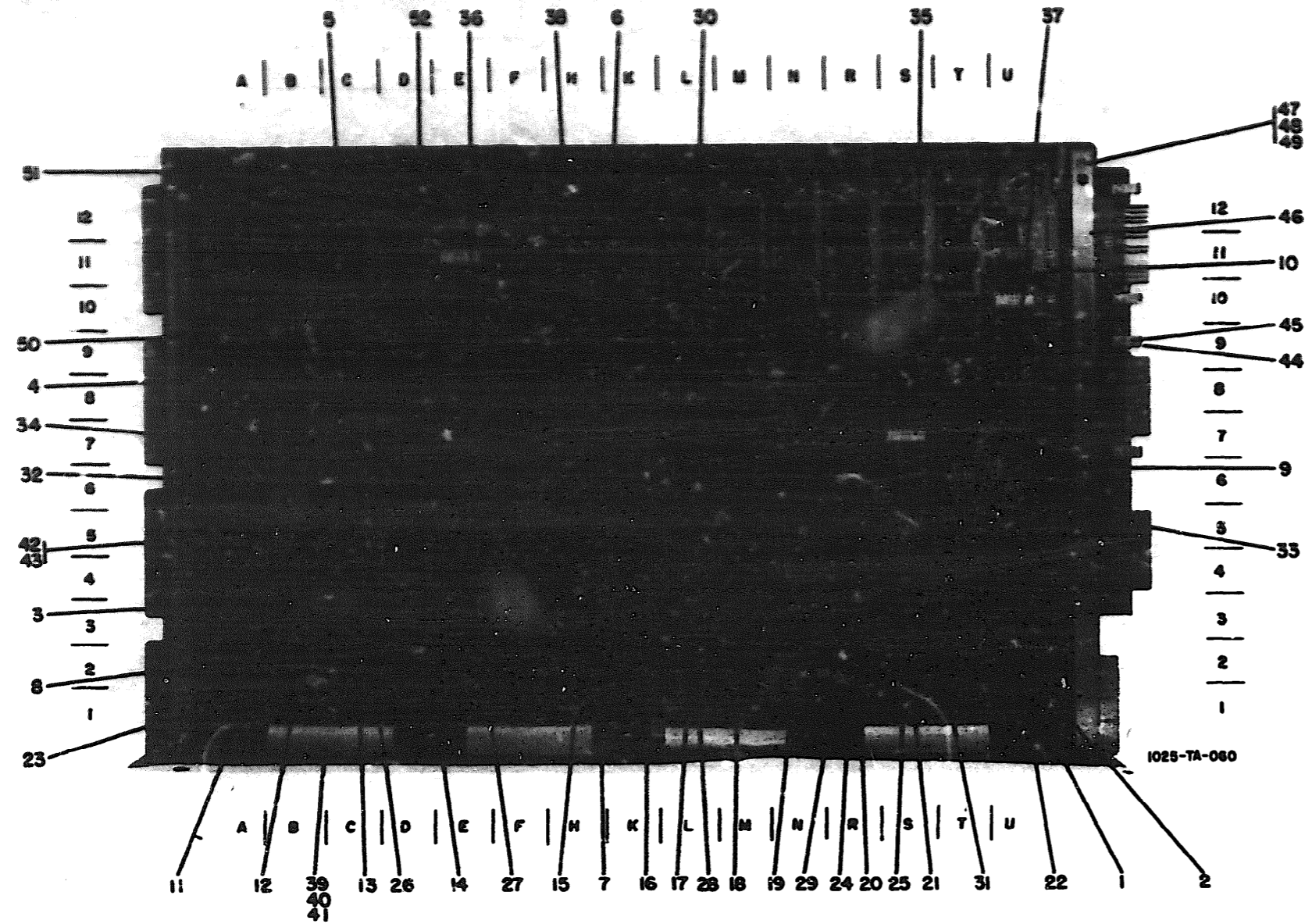


Figure 2. Circuit Card Assembly #1

GROUP ASSEMBLY PARTS LIST

Figure
& Index
No.

2

- 1

- 2

- 3

Ref. Des.	Locator	Description	Part Number	Code Ident	Units Per Assy	Usable on Code
A1		CIRCUIT CARD ASSEMBLY #1 (SEE FIGURE 1-1 FOR NHA) . .	103946		REF	
C1		. CAPACITOR, FIXED, ELECTROLYTIC, 180MF, ± 10%, 10V	CSR13D186KM	81349	1	
C2	1U	. CAPACITOR, FIXED, CERAMIC, 0.01MF, +80Z -20Z, 100V	805-000Z5V0-103Z	72982	1	
C3	1r	. SAME AS C2			1	
C4	1S	. SAME AS C2			1	
C5	1R	. SAME AS C2			1	
C6	1N	. SAME AS C2			1	
C7	1M	. SAME AS C2			1	
C8	1L	. SAME AS C2			1	
C9	1K	. SAME AS C2			1	
C10	1F	. SAME AS C2			1	
C11	3L	. SAME AS C2			1	
C12	3C	. SAME AS C2			1	
C13	3H	. SAME AS C2			1	
C14	4E	. SAME AS C2			1	
C15	3C	. SAME AS C2			1	
C16	3C	. CAPACITOR, FIXED, MICA 100PF, ±5Z, 500V.	DM15-101J	72136	1	
C17	3B	. SAME AS C2			1	
C18	3A	. SAME AS C2			1	
C19	5N	. SAME AS C2			1	

GROUP ASSEMBLY PARTS LIST

Figure
& Index
No.

2

Ref. Des.	Locator	Description	Part Number	Code Ident	Units Per Assy	Usable on Code
C20	5M	. SAME AS C2			1	
C21	5L	. SAME AS C2			1	
C22	5D	. SAME AS C2			1	
C23	6D	. SAME AS C16			1	
C24	6C	. SAME AS C2			1	
C25	5B	. SAME AS C2			1	
C26	5A	. SAME AS C2			1	
C27	7U	. SAME AS C2			1	
C28	7T	. SAME AS C2			1	
C29	7S	. SAME AS C2			1	
C30	7K	. SAME AS C2			1	
C31	7H	. SAME AS C2			1	
C32	7R	. SAME AS C2			1	
C33	6D	. SAME AS C2			1	
C34	6D	. SAME AS C16			1	
C35	7R	. SAME AS C2			1	
C36	7N	. SAME AS C2			1	
C37	7B	. SAME AS C2			1	
C38	8B	. SAME AS C16			1	
C40	8F	. SAME AS C2			1	
C41	8C	. SAME AS C2			1	
C42	8C	. CAPACITOR, FIXED, MICA 33PF, +5%, 500V	DM15-330J	72136	1	
C43	9A	. SAME AS C2			1	
C44	10U	. SAME AS C2			1	

- 4

GROUP ASSEMBLY PARTS LIST

Figure
& Index
No.

2

Ref. Des.	Locator	Description	Part Number	Code Ident	Units Per Assy	Usable on Code
C45	10S	. SAME AS C2			1	
C46	9R	. SAME AS C2			1	
C47	9N	. SAME AS C2			1	
C48	9L	. SAME AS C2			1	
C49	10E	. SAME AS C2			1	
C50	9D	. SAME AS C2			1	
C51	9C	. SAME AS C2			1	
C52	10C	. SAME AS C42			1	
C53	10B	. SAME AS C2			1	
C54	10B	. SAME AS C42			1	
C55	10T	. SAME AS C2			1	
C56	10S	. SAME AS C2			1	
C57	10K	. SAME AS C2			1	
C58	10H	. SAME AS C2			1	
C59	10F	. SAME AS C2			1	
C60	10C	. SAME AS C2			1	
C61	11C	. CAPACITOR, FIXED, MICA, 220PF, ±5%, 500V	CD15FD221J03	14655	1	
C62	11S	. SAME AS C2			1	
C63	11R	. SAME AS C2			1	
C64	11N	. SAME AS C2			1	
C65	12L	. SAME AS C2			1	

- 5

GROUP ASSEMBLY PARTS LIST

Figure
& Index
No.

2

-7

-8

-9

-10

Ref. Des.	Locator	Description	Part Number	Code Ident	Units Per Assy	Usabl on. Code
C66	-	. SAME AS C2			1	
C67	-	. SAME AS C2			1	
DL1	6H	. DELAY LINE, ELECTRICAL, 60 NANoseconds	840007	52483	1	
DL2	12D	. SAME AS DL1			1	
J5	-	. CONNECTOR, RECEPTACLE, ELECTRICAL	3426-0000	75037	1	
J6	-	. SAME AS J5			1	
J7	-	. SAME AS J5			1	
J8	-	. SAME AS J5			1	
R1	2C	. RESISTOR FIXED FILM, 5.6K, +5%, 1/4 W	RL07S562J	81349	1	
R2	3C	. SAME AS R1			1	
R3	5D	. SAME AS R1			1	
R4	6U	. RESISTOR, FIXED FILM, 2.2K, +5%, 1/4 W	RL07S222J	81349	1	
R5	6U	. SAME AS R4			1	
R6	7D	. SAME AS R1			1	
R7	7B	. SAME AS R1			1	
R8	8C	. SAME AS R1			1	
R9	9C	. SAME AS R1			1	
R10	9B	. SAME AS R1			1	
R11	10C	. SAME AS R1			1	
R12	11U	. RESISTOR, FIXED FILM, 220 OHMS, +5%, 1/4 W . .	RL07S221J	81349	1	

GROUP ASSEMBLY PARTS LIST

Figure & Index No.

2

Ref. Des.	Locator	Description	Part Number	Code Ident	Units Per Assy	Usable on Code
R13	10U	. SAME AS R12			1	
R14	10U	. SAME AS R12			1	
R15	10U	. SAME AS R12			1	
R16	9U	. SAME AS R12			1	
R17	9U	. SAME AS R12			1	
R18	9U	. SAME AS R12			1	
R19	8U	. SAME AS R12			1	
R20	8U	. SAME AS R12			1	
R21	9U	. SAME AS R12			1	
R22	7U	. SAME AS R12			1	
R23	7U	. SAME AS R12			1	
- 1 1 U1	1A	. INTEGRATED CIRCUIT, BCD-TO-DECIMAL DECODER. .	SN7442N	01295	1	
- 1 2 U2	1B	. INTEGRATED CIRCUIT, HEX INVERTER	SN7404N	01295	1	
- 1 3 U3	1C	. INTEGRATED CIRCUIT, 8 INPUT POSITIVE NAND GATE	SN7430N	01295	1	
- 1 4 U4	1D	. INTEGRATED CIRCUIT, 8-BIT PARALLEL IN, PARALLEL OUT, BI-DIRECTIONAL SHIFT REGISTER	SN74198N	01295	1	
- 1 5 U5	1H	. INTEGRATED CIRCUIT, QUAD 2-LINE TO 1 LINE DATA SELECTORS/MULTI-PLEXERS	SN74157N	01295	1	
- 1 6 U6	1K	. INTEGRATED CIRCUIT, QUAD D-TYPE FLIP-FLOP WITH CLEAR	SN74175N	01295	1	

GROUP ASSEMBLY PARTS LIST

Figure
& Index
No.

2

Ref. Des.	Locator	Description	Part Number	Code Ident	Units Per Assy	Usable on Code
-17 U7	1L	• INTEGRATED CIRCUIT, QUAD 2 INPUT POSITIVE AND GATE	SN7408N	01295	1	
-18 U8	1M	• INTEGRATED CIRCUIT, HEX INVERTER	SN74H04N	01295	1	
-19 U9	1N	• INTEGRATED CIRCUIT, DUAL 4 INPUT POSITIVE NAND GATE	SN7420N	01295	1	
-20 U10	1R	• INTEGRATED CIRCUIT, QUAD 2 INPUT POSITIVE NOR GATE	SN7402N	01295	1	
-21 U11	1S	• INTEGRATED CIRCUIT, QUAD 2 INPUT EXCLUSIVE OR GATE	SN7486N	01295	1	
U12	1T	• SAME AS U9			1	
-22 U13	1U	• INTEGRATED CIRCUIT, 4 BIT PARALLEL-IN, PARALLEL-OUT BI-DIRECTIONAL SHIFT	SN74194N	01295	1	
U14	2A	• SAME AS U1			1	
U15	2B	• SAME AS U10			1	
-23 U16	2C	• INTEGRATED CIRCUIT, TRIPLE 3-INPUT POSITIVE NAND GATE	SN7410N	01295	1	
U17	2D	• SAME AS U4			1	
U18	2F	• SAME AS U2			1	
U19	2H	• SAME AS U5			1	
U20	2K	• SAME AS U6			1	
U21	2L	• SAME AS U2			1	

GROUP ASSEMBLY PARTS LIST

Figure & Index No.	Ref. Des.	Locator	Description	Part Number	Code Ident	Units Per Assy	Usable on Code
	U22	2M	. SAME AS U3			1	
	U23	2N	. SAME AS U2			1	
-24	U24	2R	. INTEGRATED CIRCUIT, DUAL 4 INPUT NOR GATE WITH STROBE	SN7425N	Ø1295	1	
-25	U25	2S	. INTEGRATED CIRCUIT, QUAD 2 INPUT POSITIVE NAND GATE	SN74ØØN	Ø1295	1	
	U26	2T	. SAME AS U3			1	
	U27	2U	. SAME AS U4			1	
	U28	3A	. SAME AS U1			1	
	U29	3B	. SAME AS U1Ø			1	
-26	U3Ø	3C	. INTEGRATED CIRCUIT, RETRIGGERABLE MONOSTABLE MULTIVIBRATOR WITH CLEAR	SN74122N	338Ø9	1	
	U31	3D	. SAME AS U25			1	
-27	U32	3E	. INTEGRATED CIRCUIT, DUAL J-K MASTER SLAVE FLIP-FLOP	SN741Ø7N	Ø1295	1	
	U33	3F	. SAME AS U25			1	
	U34	3H	. SAME AS U5			1	
	U35	3K	. SAME AS U6			1	
-28	U36	3L	. INTEGRATED CIRCUIT, 50 MHZ PRESETTABLE 4 BIT BINARY COUNTERS/ LATCHES	SN74197N	338Ø9	1	
	U37	3M	. SAME AS U16			1	
	U38	3N	. SAME AS U7			1	

GROUP ASSEMBLY PARTS LIST

Figure
& Index
No.

2

-29

Ref. Des.	Locator	Description	Part Number	Code Ident	Units Per Assy	Usab on Cod
U39	3R	. INTEGRATED CIRCUIT, DUAL D-TYPE EDGE- TRIGGERED FLIP-FLOP . . .	SN7474N	Ø1295	1	
U40	3S	. SAME AS U10			1	
U41	3T	. SAME AS U16			1	
U42	3U	. SAME AS U25			1	
U43	4A	. SAME AS U2			1	
U44	4B	. SAME AS U10			1	
U45	4C	. SAME AS U25			1	
U46	4D	. SAME AS U16			1	
U47	4E	. SAME AS U32			1	
U48	4F	. SAME AS U7			1	
U49	4H	. SAME AS U5			1	
U50	4K	. SAME AS U6			1	
U51	4L	. SAME AS U36			1	
U52	4M	. SAME AS U9			1	
U53	4N	. SAME AS U25			1	
U54	4R	. SAME AS U39			1	
U55	4S	. SAME AS U6			1	
U56	4T	. SAME AS U3			1	
U57	4U	. SAME AS U39			1	
U58	5A	. SAME AS U2			1	
U59	5C	. SAME AS U3			1	

GROUP ASSEMBLY PARTS LIST

Figure & Index No.	Ref. Des.	Locator	Description	Part Number	Code Ident	Units Per Assy	Usable on Code
	U60	5D	• SAME AS U30			1	
	U61	5E	• SAME AS U39			1	
	U62	5F	• SAME AS U1			1	
- 30	U63	5L	• INTEGRATED CIRCUIT, DUAL 4 INPUT POSITIVE NAND BUFFER	SN74H40N	01295	1	
	U64	5M	• SAME AS U63			1	
	U65	5N	• SAME AS U39			1	
	U66	5R	• SAME AS U10			1	
- 31	U67	5S	• INTEGRATED CIRCUIT, TRIPLE 3 INPUT POSITIVE NOR GATE	SN7427N	01295	1	
	U68	5T	• SAME AS U39			1	
	U69	5U	• SAME AS U39			1	
	U70	6A	• SAME AS U2			1	
	U71	6C	• SAME AS U3			1	
- 32	U72	6D	• INTEGRATED CIRCUIT, EXPANDABLE 2-2-2-3-INPUT AND-OR-INVERT GATE . . .	SN74H53N	01295	1	
	U73	6E	• SAME AS U39			1	
	U74	6F	• SAME AS U6			1	
	U75	6L	• SAME AS U32			1	
	U76	6M	• SAME AS U72			1	
	U77	6N	• SAME AS U32			1	
	U78	6R	• SAME AS U3			1	

GROUP ASSEMBLY PARTS LIST

Figure
& Index
No.

2

- 3 3

- 3 4

-35

Ref. Des.	Locator	Description	Part Number	Code Ident	Units Per Assy	Usable on Code
U79	6S	• INTEGRATED CIRCUIT, TRIPLE 3-INPUT POSITIVE AND GATE	SN74H11N	Ø1295	1	
U8Ø	6T	• SAME AS U2			1	
U81	6U	• SAME AS U25			1	
U82	7A	• INTEGRATED CIRCUIT, HEX INVERTER (OPEN COLLECTOR)	SN74HØ5N	Ø1295	1	
U83	7B	• SAME AS U3Ø			1	
U84	7C	• SAME AS U2			1	
U85	7D	• SAME AS U3Ø			1	
U86	7E	• SAME AS U7			1	
U87	7F	• SAME AS U2			1	
U88	7L	• SAME AS U5			1	
U89	7M	• SAME AS U36			1	
U9Ø	7N	• SAME AS U36			1	
U91	7R	• SAME AS U5			1	
U92	7S	• NETWORK, HYBRID CIRCUIT, DUAL IN-LINE 14 PIN PULL-UP/PULL-DOWN, 68Ø OHMS	83ØØ96		1	
U93	7T	• SAME AS U2			1	
U94	7U	• SAME AS U39			1	
U95	8A	• SAME AS U2			1	
U96	8B	• SAME AS U2			1	

GROUP ASSEMBLY PARTS LIST

Figure
& Index
No.

2

-36

-37

-38

Ref. Des.	Locator	Description	Part Number	Code Ident	Units Per Assy	Usable on Code
U97	8C	. SAME AS U30			1	
U98	8D	. SAME AS U39			1	
U99	8E	. INTEGRATED CIRCUIT, SYNCHRONOUS UP/DOWN 4-BIT BINARY COUNTER (SINGLE CLOCK LINE) . . .	SN74191N	01295	1	
U100	8F	. SAME AS U99			1	
U101	8M	. SAME AS U36			1	
U102	8N	. SAME AS U36			1	
U103	8R	. SAME AS U5			1	
U104	8S	. SAME AS U2			1	
U105	8T	. SAME AS U16			1	
U106	8U	. INTEGRATED CIRCUIT, 15V HEX INVERTER BUFFER/DRIVER	SN7416N	01295	1	
U107	9A	. SAME AS U2			1	
U108	9B	. SAME AS U30			1	
U109	9C	. SAME AS U30			1	
U110	9D	. SAME AS U25			1	
U111	9E	. SAME AS U99			1	
U112	9F	. SAME AS U99			1	
U113	9H	. INTEGRATED CIRCUIT, DUAL 4 LINE TO 1 LINE DATA SELECTOR/ MULTIPLEXER	SN74153N	01295	1	
U114	9K	. SAME AS U113			1	
U115	9L	. SAME AS U5			1	

GROUP ASSEMBLY PARTS LIST

Figure
& Index
No.

2

Ref. Des.	Locator	Description	Part Number	Code Ident	Units Per Assy	Usable on Code
U116	9M	• SAME AS U6			1	
U117	9N	• SAME AS U5			1	
U118	9R	• SAME AS U99			1	
U119	9S	• SAME AS U25			1	
U120	9T	• SAME AS U25			1	
U121	9U	• SAME AS U25			1	
U122	10B	• SAME AS U2			1	
U123	10C	• SAME AS U30			1	
U124	10D	• SAME AS U10			1	
U125	10E	• SAME AS U39			1	
U126	10F	• SAME AS U10			1	
U127	10H	• SAME AS U113			1	
U128	10K	• SAME AS U113			1	
U129	10L	• SAME AS U5			1	
U130	10M	• SAME AS U6			1	
U131	10N	• SAME AS U5			1	
U132	10R	• SAME AS U99			1	
U133	10S	• SAME AS U36			1	
U134	10T	• SAME AS U25			1	
U135	10U	• SAME AS U92			1	
U136	11D	• SAME AS U82			1	
U137	11E	• SAME AS U92			1	

GROUP ASSEMBLY PARTS LIST

Figure
& Index
No.

Ref. Des.	Locator	Description	Part Number	Code Ident	Units Per Assy	Usable on Code
U138	11F	• SAME AS U67			1	
U139	11H	• SAME AS U113			1	
U140	11K	• SAME AS U113			1	
U141	11L	• SAME AS U5			1	
U142	11M	• SAME AS U6			1	
U143	11N	• SAME AS U5			1	
U144	11R	• SAME AS U99			1	
U145	11S	• SAME AS U36			1	
U146	11T	• SAME AS U2			1	
U147	11U	• SAME AS U106			1	
U148	12A	• SAME AS U82			1	
U149	12B	• SAME AS U82			1	
U150	12C	• SAME AS U82			1	
U151	12H	• SAME AS U113			1	
U152	12K	• SAME AS U113			1	
U153	12L	• SAME AS U5			1	
U154	12M	• SAME AS U6			1	
U155	12N	• SAME AS U5			1	
U156	12R	• SAME AS U99			1	
U157	12S	• SAME AS U36			1	
U158	12T	• SAME AS U2			1	
U159	12U	• SAME AS U106			1	

GROUP ASSEMBLY PARTS LIST

Figure
& Index
No.

2

-39

-40

-41

-42

-43

-44

Ref. Des.	Locator	Description	Part Number	Code Ident	Unit. Per Assy	Usable on Code
W5	-	• CABLE ASSEMBLY, POWER, ELECTRICAL	103165		1	
		•• CONNECTOR, RECEPTACLE, ELECTRICAL	3425-0000	75037	1	
		•• CABLE, FLAT, 5Ø CONDUCTOR	3365-5Ø	94961	A/R	
W6		• SAME AS W5			1	
W7		• SAME AS W5			1	
W8		• SAME AS W5			1	
X1	5B	• SOCKET, PLUG-IN	C931402	73803	1	
X2	6B	• SAME AS X1			1	
X3	10A	• SAME AS X1			1	
X4	11A	• SAME AS X1			1	
X5	11B	• SAME AS X1			1	
X6	11C	• SAME AS X1			1	
XTP1	5B	• HEADER	614DG5	91506	1	
XTP2	6B	• SAME AS XTP1			1	
XTP3	10A	• SAME AS XTP1			1	
XTP4	11A	• SAME AS XTP1			1	
XTP5	11B	• SAME AS XTP1			1	
XTP6	11C	• SAME AS XTP1			1	
		• CONNECTOR MOUNTING BRACKET, 16 GA CRS TYPE II CADMIUM PLATE. .	101625		4	

GROUP ASSEMBLY PARTS LIST

Figure & Index No.

2

-45

-46

-47

-48

-49

-50

-51

-52

Ref. Des.	Locator	Description	Part Number	Code Ident	Units Per Assy	Usable on Code
		(ATTACHING PART)				
		• RIVET, BLIND Ø.25Ø MAX DIAMETER Ø.125 MIN DIAMETER . . .	AD42ABS	Ø77Ø7	4	
		---*---				
		• STIFFENER, REAR 18GA, CRS, TYPE II CADMIUM PLATE	1Ø1823		1	
		(ATTACHING PARTS)				
		• SCREW, MACHINE	MS51957-17	969Ø6	3	
		• WASHER, FLAT	MS15795-8Ø4	969Ø6	3	
		• WASHER, LOCK	MS35338-135	969Ø6	3	
		---*---				
		• STIFFENER, FRONT 18GA CRS TYPE II CADMIUM PLATE	1Ø1897		1	
		(ATTACHING PARTS)				
		• SCREW MACHINE	MS51957-17	969Ø6	3	
		• WASHER, FLAT	MS15795-8Ø4	969Ø6	3	
		• WASHER, LOCK	MS35338-135	969Ø6	3	
		---*---				
		• INSULATOR, WASHER . . .	5624-12-5	86928	1	
		• PRINTED WIRING BOARD . .	1Ø3947		1	

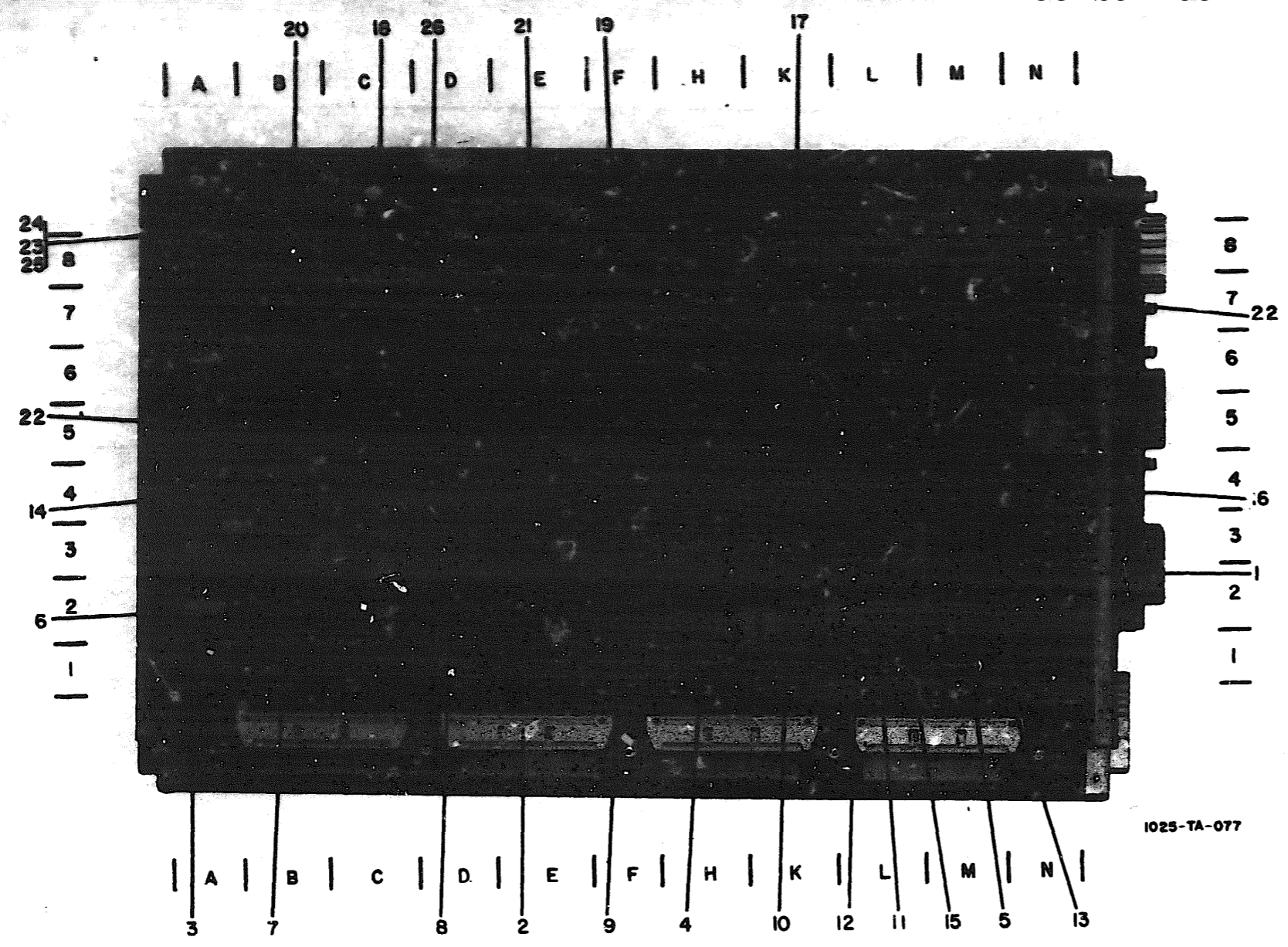


Figure 3. Circuit Card Assembly #2

GROUP ASSEMBLY PARTS LIST

Figure
& Index
No.

- 1

Ref. Des.	Locator	Description	Part Number	Code Ident	Units Per Assy	Usable on Code
A2		. CIRCUIT CARD ASSEMBLY, #2 (SEE FIGURE 1-5 FOR NHA)	103948		REF	
C1	3N	. CAPACITOR, FIXED, CERAMIC 0.01MF, +80% - 20%, 100V	805-00025V0-103Z	72982	1	
C2	3M	. SAME AS C1			1	
C3	3L	. SAME AS C1			1	
C4	3K	. SAME AS C1			1	
C5	3H	. SAME AS C1			1	
C6	3F	. SAME AS C1			1	
C7	3E	. SAME AS C1			1	
C8	2D	. SAME AS C1			1	
C9	2C	. SAME AS C1			1	
C10	3B	. SAME AS C1			1	
C11	3A	. SAME AS C1			1	
C12	5N	. SAME AS C1			1	
C13	5M	. SAME AS C1			1	
C14	5L	. SAME AS C1			1	
C15	5K	. SAME AS C1			1	
C16	4H	. SAME AS C1			1	
C17	4F	. SAME AS C1			1	
C18	4E	. SAME AS C1			1	
C19	4D	. SAME AS C1			1	
C20	5C	. SAME AS C1			1	
C21	5B	. SAME AS C1			1	

GROUP ASSEMBLY PARTS LIST

Figure
& Index
No.

3

-2

-3

-4

Ref. Des.	Locator	Description	Part Number	Code Ident	Units Per Assy	Used on Cod
C22	5A	• SAME AS C1			1	
C23	7N	• SAME AS C1			1	
C24	7M	• SAME AS C1			1	
C25	6L	• SAME AS C1			1	
C26	6K	• SAME AS C1			1	
C27	6H	• SAME AS C1			1	
C28	7F	• SAME AS C1			1	
C29	6F	• SAME AS C1			1	
C30	7D	• SAME AS C1			1	
C31	7C	• SAME AS C1			1	
C32	7B	• SAME AS C1			1	
C33	7A	• SAME AS C1			1	
J5		• CONNECTOR, RECEPTACLE, ELECTRICAL	3433-1002	26066	1	
J6		• SAME AS J5			1	
J7		• SAME AS J5			1	
J8		• SAME AS J5			1	
U1	1A	• INTEGRATED CIRCUIT, HEX INVERTER	SN7404N	01295	1	
U2	1B	• SAME AS U1			1	
U3	1C	• SAME AS U1			1	
U4	1H	• INTEGRATED CIRCUIT, 4-BIT MAGNITUDE COMPARATORS	SN7485N	01295	1	

GROUP ASSEMBLY PARTS LIST

Figure
& Index
No.

	Ref. Des.	Locator	Description	Part Number	Code Ident	Units Per Assy	Usable on Code
- 5	U5	1M	• INTEGRATED CIRCUIT, QUAD 2 INPUT POSITIVE NAND GATE	SN7400N	01295	1	
- 6	U6	2A	• NETWORK, HYBRID CIRCUIT, DUAL IN-LINE 14PIN PULL- UP/PULL-DOWN, 680 OHMS. .	830096		1	
	U7	2B	• INTEGRATED CIRCUIT, 64-BIT READ-WRITE MEMORY	SN7489N	73803	1	
	U8	2C	• SAME AS U7			1	
- 8	U9	2D	• INTEGRATED CIRCUIT, QUAD 2-LINE TO 1-LINE DATA SELECTORS/MULTI- PLEXERS	SN74157N	01295	1	
	U10	2E	• SAME AS U9			1	
- 9	U11	2F	• INTEGRATED CIRCUIT, SYNCHRONOUS 4-BIT BINARY COUNTER WITH DIRECT CLEAR	SN74161N	01295	1	
	U12	2H	• SAME AS U4			1	
- 10	U13	2K	• INTEGRATED CIRCUIT, 8 INPUT POSITIVE NAND GATE	SN7430N	01295	1	
- 11	U14	2L	• INTEGRATED CIRCUIT, DUAL J-K MASTER SLAVE FLIP-FLOP	SN74107N	01295	1	
	U15	2M	• SAME AS U5			1	
	U16	3A	• SAME AS U6			1	
	U17	3B	• SAME AS U7			1	

GROUP ASSEMBLY PARTS LIST

Figure
& Index
No.

3

-12

-13

-14

-15

Ref. Des.	Locator	Description	Part Number	Code Ident	Units Per Assy	Usable on Code
U18	3C	• SAME AS U7			1	
U19	3D	• SAME AS U9			1	
U20	3E	• SAME AS U9			1	
U21	3F	• SAME AS U13			1	
U22	3H	• SAME AS U14			1	
U23	3K	• SAME AS U5			1	
U24	3L	• INTEGRATED CIRCUIT, QUAD 2-INPUT POSITIVE NAND GATE	SN7408N	01295	1	
U25	3M	• INTEGRATED CIRCUIT, QUAD 2-INPUT POSITIVE NAND GATE	SN74H08N	01295	1	
U26	4A	• SAME AS U14			1	
U27	4B	• INTEGRATED CIRCUIT, 50 MHz PRESETTABLE 4-BIT BINARY COUNTERS/ LATCHES	SN74197N	33809	1	
U28	4C	• SAME AS U9			1	
U29	4D	• SAME AS U4			1	
U30	4E	• SAME AS U27			1	
U31	4F	• SAME AS U5			1	
U32	4H	• SAME AS U1			1	
U33	4K	• SAME AS U5			1	
U34	4L	• INTEGRATED CIRCUIT, TRIPLE 3-INPUT POSITIVE NAND GATE	SN7410N	01295	1	
U35	4M	• SAME AS U14			1	

GROUP ASSEMBLY PARTS LIST

Ref. Des.	Locator	Description	Part Number	Code Ident	Units Per Assy	Usable on Code
U36	4N	• INTEGRATED CIRCUIT, QUAD 2 INPUT POSITIVE NOR GATE	SN7402N	01295	1	
U37	5A	• SAME AS U36			1	
U38	5B	• SAME AS U5			1	
U39	5C	• SAME AS U24			1	
U40	5D	• SAME AS U34			1	
U41	5E	• SAME AS U14			1	
U42	5F	• SAME AS U34			1	
U43	5H	• SAME AS U24			1	
U44	5K	• INTEGRATED CIRCUIT, DUAL 4 INPUT POSITIVE NAND GATE	SN7420N	01295	1	
U45	5L	• SAME AS U44			1	
U46	5M	• SAME AS U5			1	
U47	5N	• SAME AS U1			1	
U48	6A	• SAME AS U14			1	
U49	6B	• SAME AS U14			1	
U50	6C	• INTEGRATED CIRCUIT, BCD-TO-DECIMAL DECODER	SN7442N	01295	1	
U51	6D	• SAME AS U5			1	
U52	6E	• SAME AS U14			1	
U53	6F	• INTEGRATED CIRCUIT, TRIPLE 3-INPUT POSITIVE AND GATE	SN74H11N	01295	1	
U54	6H	• SAME AS U34			1	

GROUP ASSEMBLY PARTS LIST

Figure
& Index
No.

3

-20

-21

-22

-23

-24

-25

-26

Ref. Des.	Locator	Description	Part Number	Code Ident	Units Per Assy	Usab on Cod
U55	6K	• SAME AS U5			1	
U56	6L	• SAME AS U14			1	
U57	6M	• SAME AS U14			1	
U58	7B	• INTEGRATED CIRCUIT, TRIPLE 3 INPUT POSITIVE NOR GATE	SN7427N	Ø1295	1	
U59	7C	• SAME AS U1			1	
U6Ø	7E	• INTEGRATED CIRCUIT, 4-LINE-TO-16-LINE (1 OF 16) DECODER/ MULTIPLEXER	SN74154N	Ø1295	1	
U61	7F	• SAME AS U1			1	
U62	7H	• SAME AS U14			1	
U63	7K	• SAME AS U5			1	
U64	8B	• SAME AS U36			1	
U65	8E	• SAME AS U11			1	
U66	8F	• SAME AS U24			1	
U67	8H	• SAME AS U34			1	
		• STIFFENER, EPOXY GLASS FIBER, .25" x .38" x 9.9Ø" LG	1Ø1895		2	
		(ATTACHING PARTS)				
		• SCREW, MACHINE	MS51957-17	969Ø6	6	
		• WASHER, FLAT	MS15795-8Ø4	969Ø6	6	
		• WASHER, LOCK, SP.	MS35338-135	969Ø6	6	
		-----*				
		• PRINTED WIRING BOARD . . .	1Ø3949		1	

SECTION III
NUMERICAL INDEX

Part Number	STOCK NUMBER	Figure & Index Number	Qty Per Art	Source Code	Repair Code
AD42ABS	5320 9564067	2-45	4	XBFZZ-	
CD15FD221J03	5910 8353249	2-5	1	PAFZZN	
CSR13D186KM	5910 1114993	2-1	1	PAFZZN	
C931402	5935 4814140	2-42	6	PAFZZN	
DM15-101J	5910 7128655	2-3	4	PAFZZN	
DM15-330J	5910 5819621	2-4	3	PAFZZN	
HS2033		1-6	5	PAFZZN	
MS15795-804	5310 7821349	1-3	8	PAFZZN	
		1-	8		
		2-48	3		
		2-	3		
		3-24	6		
MS35338-135	5310 9338118	1-4	8	PAFZZN	
		1-	8		
		2-49	3		
		2-	3		
		3-25	6		
MS51957-14	5305 0545648	1-2	8	PAFZZN	
		1-	8		
MS51957-17	5305 0545651	2-47	3	XBFZZ-	
		2-	3		
		3-22	6		
RL07S221J	5905 9904537	2-10	12	PAFZZN	
RL07S222J	5905 7275355	2-9	2	PAFZZN	
RL07S562J	5905 7672418	2-8	9	PAFZZN	
SN74H00N	5962 1937555	3-13	1	PAFZZN	
SN74H04N	5962 1392849	2-18	1	PAFZZN	
SN74H05N	5962 1465044	2-34	5	PAFZZN	
SN74H11N	5962 4954891	2-33	1	PAFZZN	
		3-19	1		
SN74H40N	5962 4654904	2-30	2	PAFZZN	
SN74H53N	5962 4954968	2-32	2	PAFZZN	
SN7400N	5962 8654625	2-25	12	PAFZZN	
		3-5	10		
SN7402N	5962 1030990	2-20	8	PAFZZN	
		3-16	3		
SN7404N	5962 4042559	2-12	18	PAFZZN	
		3-3	7		
SN7408N	5962 1754567	2-17	4	PAFZZN	
		3-12	4		
SN7410N	5962 8654626	2-23	5	PAFZZN	
		3-15	5		
SN74107N	5962 2769937	2-27	4	PAFZZN	
		3-11	11		

NUMERICAL INDEX

Part Number	STOCK NUMBER	Figure & Index Number	Qty Per Art	Source Code	Repair Code
SN74122N	5962 1725569	2-26	8	PAFZZN	
SN74153N	5962 1725586	2-38	8	PAFZZN	
SN74154N	5962 4009094	3-21	1	PAFZZN	
SN74157N	5962 2770188	2-15	15	PAFZZN	
		3-8	5		
SN7416N	5962 1630149	2-37	3	PAFZZN	
SN74161N	5962 3271155	3-9	2	PAFZZN	
SN74175N	5962 1630145	2-16	10	PAFZZN	
SN74191N	5962 9364946	2-36	8	PAFZZN	
SN74194N	5962 4658400	2-22	1	PAFZZN	
SN74197N	5962 9363559	2-28	9	PAFZZN	
		3-14	2		
SN74198N		2-14	3	PAFZZN	
SN7420N	5962 9271567	2-19	3	PAFZZN	
		3-17	2		
SN7425N	5962 5307236	2-24	1	PAFZZN	
SN7427N	5962 2729506	2-31	2	PAFZZN	
		3-20	1		
SN7430N	5962 2560343	2-13	7	PAFZZN	
		3-10	2		
SN7442N	5962 1930329	2-11	4	PAFZZN	
		3-18	1		
SN7474N	5962 1064287	2-29	11	PAFZZN	
SN7485N	5962 2770098	3-4	3	PAFZZN	
SN7486N	5962 1474528	2-21	1	PAFZZN	
SN7489N	5962 1725581	3-7	4	PAFZZN	
101625		2-44	4	XBFZZ-	
101823		2-46	1	XBDZZ-	
101895		3-22	2	XBDZZ-	
101897		2-50	1	XBDZZ-	
103165		2-39	4	AFFFZ-	
103945		1	1	AFFFF-	
103946		1-1	1	PAFDDT	
103947		2-52	1	XADZZ-	
103948		1-5	1	PAFDDT	
103949		3-26	1	XADZZN	
3365-50		2-41	A/R	XBFZZ-	
3425-0000	5935 3319272	2-40	1	PAFZZN	
3426-0000		2-7	4	PAFZZN	
3433-1002	5935 4575755	3-2	4	PAFZZN	
5624-12-5	5970 3459624	2-51	1	XBDZZ-	
614DG5	5935 5289003	2-43	6	PAFZZN	

NUMERICAL INDEX

Part Number	STOCK NUMBER	Figure & Index Number	Qty Per Art	Source Code	Repair Code
805-00025V0-1032	5910 2333339	2-2	57	PAFZZN	
8108B0440-3	5340 7628083	3-1	33	PAFZZN	
830096		1-7	3	PAFZZN	
840007		2-35	3	PAFZZN	
		3-6	2	PAFZZN	
		2-6	2	PAFZZN	

This page intentionally blank

SECTION IV
REFERENCE DESIGNATION INDEX

Reference Designation	Figure and Index Number	Part Number
1	1	103945
1	1-6	HS2033
1	1-7	8108B0440-3
1A1	1-1	103946
1A1	1-2	MS51957-14
1A1	1-3	MS15795-804
1A1	1-4	MS35338-135
1A1	2-40	3425-0000
1A1	12-41	3365-50
1A1	2-44	101625
1A1	2-45	AD42ABS
1A1	2-46	101823
1A1	2-47	MS51957-17
1A1	2-48	MS15795-804
1A1	2-49	MS35338-135
1A1	2-50	101897
1A1	2-	MS51957-17
1A1	2-	MS15795-804
1A1	2-	MS35338-135
1A1	2-51	5624-12-5
1A1	2-52	103947
1A1C1	2-1	CSR13D186KM
1A1C2	2-2	805-000Z5V0-103Z
1A1C3	2-2	805-000Z5V0-103Z
1A1C4	2-2	805-000Z5V0-103Z
1A1C5	2-2	805-000Z5V0-103Z
1A1C6	2-2	805-000Z5V0-103Z
1A1C7	2-2	805-000Z5V0-103Z
1A1C8	2-2	805-000Z5V0-103Z
1A1C9	2-2	805-000Z5V0-103Z
1A1C10	2-2	805-000Z5V0-103Z
1A1C11	2-2	805-000Z5V0-103Z
1A1C12	2-2	805-000Z5V0-103Z
1A1C13	2-2	805-000Z5V0-103Z
1A1C14	2-2	805-000Z5V0-103Z
1A1C15	2-2	805-000Z5V0-103Z
1A1C16	2-3	DM15-101J
1A1C17	2-2	805-000Z5V0-103Z
1A1C18	2-2	805-000Z5V0-103Z
1A1C19	2-2	805-000Z5V0-103Z
1A1C20	2-2	805-000Z5V0-103Z
1A1C21	2-2	805-000Z5V0-103Z

REFERENCE DESIGNATION INDEX

Reference Designation	Figure and Index Number	Part Number
1A1C22	2-2	805-00025V0-103Z
1A1C23	2-3	DM15-101J
1A1C24	2-2	805-00025V0-103Z
1A1C25	2-2	805-00025V0-103Z
1A1C26	2-2	805-00025V0-103Z
1A1C27	2-2	805-00025V0-103Z
1A1C28	2-2	805-00025V0-103Z
1A1C29	2-2	805-00025V0-103Z
1A1C30	2-2	805-00025V0-103Z
1A1C31	2-2	805-00025V0-103Z
1A1C32	2-2	805-00025V0-103Z
1A1C33	2-2	805-00025V0-103Z
1A1C34	2-3	DM15-101J
1A1C35	2-2	805-00025V0-103Z
1A1C36	2-2	805-00025V0-103Z
1A1C37	2-2	805-00025V0-103Z
1A1C38	2-3	DM15-101J
1A1C40	2-2	805-00025V0-103Z
1A1C41	2-2	805-00025V0-103Z
1A1C42	2-4	DM15-330J
1A1C43	2-2	805-00025V0-103Z
1A1C44	2-2	805-00025V0-103Z
1A1C45	2-2	805-00025V0-103Z
1A1C46	2-2	805-00025V0-103Z
1A1C47	2-2	805-00025V0-103Z
1A1C48	2-2	805-00025V0-103Z
1A1C49	2-2	805-00025V0-103Z
1A1C50	2-2	805-00025V0-103Z
1A1C51	2-2	805-00025V0-103Z
1A1C52	2-4	DM15-330J
1A1C53	2-2	805-00025V0-103Z
1A1C54	2-4	DM15-330J
1A1C55	2-2	805-00025V0-103Z
1A1C56	2-2	805-00025V0-103Z
1A1C57	2-2	805-00025V0-103Z
1A1C58	2-2	805-00025V0-103Z
1A1C59	2-2	805-00025V0-103Z
1A1C60	2-2	805-00025V0-103Z
1A1C61	2-5	CD15FD221J03
1A1C62	2-2	805-00025V0-103Z
1A1C63	2-2	805-00025V0-103Z
1A1C64	2-2	805-00025V0-103Z

REFERENCE DESIGNATION INDEX

Reference Designation	Figure and Index Number	Part Number
1A1C65	2 - 2	805-000Z5V0-103Z
1A1C66	2-2	805-000Z5V0-103Z
1A1C67	2-2	805-000Z5V0-103Z
1A1DL1	2 - 6	840007
1A1DL2	2 - 6	840007
1A1J5	2 - 7	3426-0000
1A1J6	2-7	3426-0000
1A1J7	2-7	3426-0000
1A1J8	2-7	3426-0000
1A1R1	2-8	RL07S562J
1A1R2	2-8	RL07S562J
1A1R3	2-8	RL07S562J
1A1R4	2-9	RL07S222J
1A1R5	2-9	RL07S222J
1A1R6	2-8	RL07S562J
1A1R7	2-8	RL07S562J
1A1R8	2-8	RL07S562J
1A1R9	2-8	RL07S562J
1A1R10	2-8	RL07S562J
1A1R11	2-8	RL07S562J
1A1R12	2-10	RL07S221J
1A1R13	2 - 10	RL07S221J
1A1R14	2-10	RL07S221J
1A1R15	2-10	RL07S221J
1A1R16	2-10	RL07S221J
1A1R17	2-10	RL07S221J
1A1R18	2-10	RL07S221J
1A1R19	2-10	RL07S221J
1A1R20	2-10	RL07S221J
1A1R21	2-10	RL07S221J
1A1R22	2-10	RL07S221J
1A1R23	2-10	RL07S221J
1A1U1	2-10	SN7442N
1A1U2	2-12	SN7404N
1A1U3	2-13	SN7430N
1A1U4	2 - 14	SN74198N
1A1U5	2 - 1	SN74157N
1A1U6	2-16	SN74175N
1A1U7	2-17	SN7408N
1A1U8	2-18	SN74H04N
1A1U9	2-19	SN7420N
1A1U10	2-20	SN7402N

REFERENCE DESIGNATION INDEX

Reference Designation	Figure and Index Number	Part Number
1A1U11	2-21	SN7486N
1A1U12	2-19	SN7420N
1A1U13	2-22	SN74194N
1A1U14	2-11	SN7442N
1A1U15	2-20	SN7402N
1A1U16	2-23	SN7410N
1A1U17	2-14	SN74198N
1A1U18	2-12	SN7404N
1A1U19	2-15	SN74157N
1A1U20	2-16	SN74175N
1A1U21	2-12	SN7404N
1A1U22	2-13	SN7430N
1A1U23	2-12	SN7404N
1A1U24	2-24	SN7425N
1A1U25	2-23	SN7400N
1A1U26	2-13	SN7430N
1A1U27	2-14	SN74198N
1A1U28	2-11	SN7442N
1A1U29	2-20	SN7402N
1A1U30	2-26	SN74122N
1A1U31	2-25	SN7400N
1A1U32	2-27	SN74107N
1A1U33	2-35	SN7400N
1A1U34	2-15	SN74157N
1A1U35	2-16	SN74175N
1A1U36	2-28	SN74197N
1A1U37	2-23	SN7410N
1A1U38	2-17	SN7408N
1A1U39	2-29	SN7474N
1A1U40	2-20	SN7402N
1A1U41	2-23	SN7410N
1A1U42	2-25	SN7400N
1A1U43	2-12	SN7404N
1A1U44	2-20	SN7402N
1A1U45	2-25	SN7400N
1A1U46	2-23	SN7410N
1A1U47	2-27	SN74107N
1A1U48	2-17	SN7408N
1A1U49	2-15	SN74157N
1A1U50	2-16	SN74175N
1A1U51	2-28	SN74197N
1A1U52	2-19	SN7420N
1A1U53	2-25	SN7400N

REFERENCE DESIGNATION INDEX

Reference Designation	Figure and Index Number	Part Number
1A1U54	2-29	SN7474N
1A1U55	2-16	SN74175N
1A1U56	2-13	SN7430N
1A1U57	2-29	SN7474N
1A1U58	2-12	SN7404N
1A1U59	2-13	SN7430N
1A1U60	2-26	SN74122N
1A1U61	2-29	SN7474N
1A1U62	2-11	SN7442N
1A1U63	2-30	SN74H40N
1A1U64	2-30	SN74H40N
1A1U65	2-29	SN7474N
1A1U66	2-20	SN7402N
1A1U67	2-31	SN7427N
1A1U68	2 - 29	SN7474N
1A1U69	2-29	SN7474N
1A1U70	2-12	SN7404N
1A1U71	2-13	SN7430N
1A1U72	2-32	SN74H53N
1A1U73	2-29	SN7474N
1A1U74	2-16	SN74175N
1A1U75	2-27	SN74107N
1A1U76		SN74H53N
1A1U77	2 - 27	SN74107N
1A1U78	2-13	SN7430N
1A1U79	2-33	SN74H11N
1A1U80	2-12	SN7404N
1A1U81	2-25	SN7400N
1A1U82	2-34	SN74H05N
1A1U83	2-26	SN74122N
1A1U84	2-12	SN7404N
1A1U85	2-26	SN74122N
1A1U86	2-17	SN7408N
1A1U87	2-12	SN7404N
1A1U88	2-15	SN74157N
1A1U89	2-28	SN74197N
1A1U90	2-28	SN74197N
1A1U91	2-15	SN74157N
1A1U92	2-35	830096
1A1U93	2-12	SN7404N
1A1U94	2 - 28	SN74197N
1A1U95	2-12	SN7404N

REFERENCE DESIGNATION INDEX

Reference Designation	Figure and Index Number	Part Number
1A1U96	2-12	SN7404N
1A1U97	2-26	SN74122N
1A1U98	2-29	SN7474N
1A1U99	2-36	SN74191N
1A1U100	2-36	SN74191N
1A1U101	2-28	SN74197N
1A1U102	2-28	SN74197N
1A1U103	2-15	SN74157N
1A1U104	2-12	SN7404N
1A1U105	2-23	SN7410N
1A1U106	2-37	SN7416N
1A1U107	2-12	SN7404N
1A1U108	2-26	SN74122N
1A1U109	2-26	SN74122N
1A1U110	2-25	SN7400N
1A1U111	2-36	SN74191N
1A1U112	2-36	SN74191N
1A1U113	2-38	SN74153N
1A1U114	2-38	SN74153N
1A1U115	2-15	SN74157N
1A1U116	2-16	SN74175N
1A1U117	2-15	SN74157N
1A1U118	2-36	SN74191N
1A1U119	2-25	SN7400N
1A1U120	2-25	SN7400N
1A1U121	2-25	SN7400N
1A1U122	2-12	SN7404N
1A1U123	2-26	SN74122N
1A1U124	2-20	SN7402N
1A1U125	2-29	SN7474N
1A1U126	2-20	SN7402N
1A1U127	2-38	SN74153N
1A1U128	2-38	SN74153N
1A1U129	2-15	SN74157N
1A1U130	2-16	SN74175N
1A1U131	2-15	SN74157N
1A1U132	2-36	SN74191N
1A1U133	2-28	SN74197N
1A1U134	2-25	SN7400N
1A1U135	2-35	830096
1A1U136	2-34	SN74H05N
1A1U137	2-35	830096

REFERENCE DESIGNATION INDEX

Reference Designation	Figure and Index Number	Part Number
1A1U138	2-31	SN7427N
1A1U139	2-38	SN74153N
1A1U140	2-38	SN74153N
1A1U141	2-15	SN74157N
1A1U142	2-16	SN74175N
1A1U143	2-15	SN74157N
1A1U144	2-36	SN74191N
1A1U145	2-28	SN74197N
1A1U146	2-12	SN7404N
1A1U147	2-37	SN7416N
1A1U148	3-34	SN74H05N
1A1U149	2-34	SN74H05N
1A1U150	2-34	SN74H05N
1A1U151	2-38	SN74153N
1A1U152	2-38	SN74153N
1A1U153	2-15	SN74157N
1A1U154	2-16	SN74175N
1A1U155	2-15	SN74157N
1A1U156	2-36	SN74191N
1A1U157	2-28	SN74197N
1A1U158	2-12	SN7404N
1A1U159	2-37	SN7416N
1A1W5	2-39	103165
1A1W6	2-39	103165
1A1W7	2-39	103165
1A1W8	2-39	103165
1A1X1	2-42	C931402
1A1X2	2-42	C931402
1A1X3	2-42	C931402
1A1X4	2-42	C931402
1A1X5	2-42	C931402
1A1X6	2-42	C931402
1A1XTP1	2-43	614DG5
1A1XTP2	2-43	614DG5
1A1XTP3	2-43	614DG5
1A1XTP4	2-43	614DG5
1A1XTP5	2-43	614DG5
1A1XTP6	2-43	614DG5
1A2	1-5	103948
1A2	1-	MS51957-14
1A2	1-	MS51957-804
1A2	1-	MS35338-135

REFERENCE DESIGNATION INDEX

Reference Designation	Figure and Index Number	Part Number
1A2	3-22	101895
1A2	3-23	MS51957-17
1A2	3-24	MS15795-804
1A2	3-25	MS35338-135
1A2	3-26	103949
1A2C1	3-1	805-000Z5V0-103Z
1A2C2	3-1	805-000Z5V0-103Z
1A2C3	3-1	805-000Z5V0-103Z
1A2C4	3-1	805-000Z5V0-103Z
1A2C5	3-1	805-000Z5V0-103Z
1A2C6	3-1	805-000Z5V0-103Z
1A2C7	3-1	805-000Z5V0-103Z
1A2C8	3-1	805-000Z5V0-103Z
1A2C9	3-1	805-000Z5V0-103Z
1A2C10	3-1	805-000Z5V0-103Z
1A2C11	3-1	805-000Z5V0-103Z
1A2C12	3-1	805-000Z5V0-103Z
1A2C13	3-1	805-000Z5V0-103Z
1A2C14	3-1	805-000Z5V0-103Z
1A2C15	3-1	805-000Z5V0-103Z
1A2C16	3-1	805-000Z5V0-103Z
1A2C17	3-1	805-000Z5V0-103Z
1A2C18	3-1	805-000Z5V0-103Z
1A2C19	3-1	805-000Z5V0-103Z
1A2C20	3-1	805-000Z5V0-103Z
1A2C21	3-1	805-000Z5V0-103Z
1A2C22	3-1	805-000Z5V0-103Z
1A2C23	3-1	805-000Z5V0-103Z
1A2C24	3-1	805-000Z5V0-103Z
1A2C25	3-1	805-000Z5V0-103Z
1A2C26	3-1	805-000Z5V0-103Z
1A2C27	3-1	805-000Z5V0-103Z
1A2C28	3-1	805-000Z5V0-103Z
1A2C29	3-1	805-000Z5V0-103Z
1A2C30	3-1	805-000Z5V0-103Z
1A2C31	3-1	805-000Z5V0-103Z
1A2C32	3-1	805-000Z5V0-103Z
1A2C33	3-1	805-000Z5V0-103Z
1A2J5	3-2	3433-1002
1A2J6	3-2	3433-1002
1A2J7	3-2	3433-1002
1A2J8	3-2	3433-1002

REFERENCE DESIGNATION INDEX

Reference Designation	Figure and Index Number	Part Number
1A2U1	3-3	SN7404N
1A2U2	3-3	SN7404N
1A2U3	3-3	SN7404N
1A2U4	3-4	SN7485N
1A2U5	3-5	SN7400N
1A2U6	3-6	830096
1A2U7	3-7	SN7489N
1A2U8	3-7	SN7489N
1A2U9	3-8	SN74157N
1A2U10	3-8	SN74157N
1A2U11	3-9	SN74161N
1A2U12	3-4	SN7485N
1A2U13	3-10	SN7430N
1A2U14	3-11	SN74107N
1A2U15	3-5	SN7400N
1A2U16	3-6	830096
1A2U17	3-7	SN7489N
1A2U18	3-7	SN7489N
1A2U19	3-8	SN74157N
1A2U20	3-8	SN74157N
1A2U21	3-1	SN7430N
1A2U22	3-11	SN74107N
1A2U23	3-5	SN7400N
1A2U24	3-12	SN7408N
1A2U25	3-13	SN74H00N
1A2U26	3-11	SN74107N
1A2U27	3-14	SN74197N
1A2U28	3-8	SN74157N
1A2U29	3-4	SN7485N
1A2U30	3-14	SN74197N
1A2U31	3-5	SN7400N
1A2U32	3-3	SN7404N
1A2U33	3-5	SN7400N
1A2U34	3-15	SN7410N
1A2U35	3-11	SN74107N
1A2U36	3-16	SN7402N
1A2U37	3-16	SN7402N
1A2U38	3-5	SN7400N
1A2U39	3-12	SN7408N
1A2U40	3-15	SN7410N
1A2U41	3-11	SN74107N
1A2U42	3-15	SN7410N

REFERENCE DESIGNATION INDEX

Reference Designation	Figure and Index Number	Part Number
1A2U43	3-12	SN7408N
1A2U44	3-17	SN7420N
1A2U45	3-17	SN7420N
1A2U46	3-5	SN7400N
1A2U47	3-3	SN7404N
1A2U48	3-11	SN74107N
1A2U49	3-11	SN74107N
1A2U50	3-18	SN7442N
1A2U51	3-5	SN7400N
1A2U52	3-11	SN74107N
1A2U53	3-19	SN74H11N
1A2U54	3-15	SN7410N
1A2U55	3-5	SN7400N
1A2U56	3-11	SN74107N
1A2U57	3-11	SN74107N
1A2U58	3-28	SN7427N
1A2U59	3-3	SN7404N
1A2U60	3-21	SN74154N
1A2U61	3-3	SN7404N
1A2U62	3-11	SN74107N
1A2U63	3-5	SN7400N
1A2U64	3-16	SN7402N
1A2U65	3-9	SN74161N
1A2U66	3-12	SN7408N
1A2U67	3-15	SN7410N

DEPARTMENT OF THE ARMY
US ARMY AG PUBLICATIONS CENTER
1655 WOODSON ROAD
ST. LOUIS, MISSOURI 63114
OFFICIAL BUSINESS
PENALTY FOR PRIVATE USE \$300

POSTAGE AND FEES PAID
DEPARTMENT OF THE ARMY
DOD 314

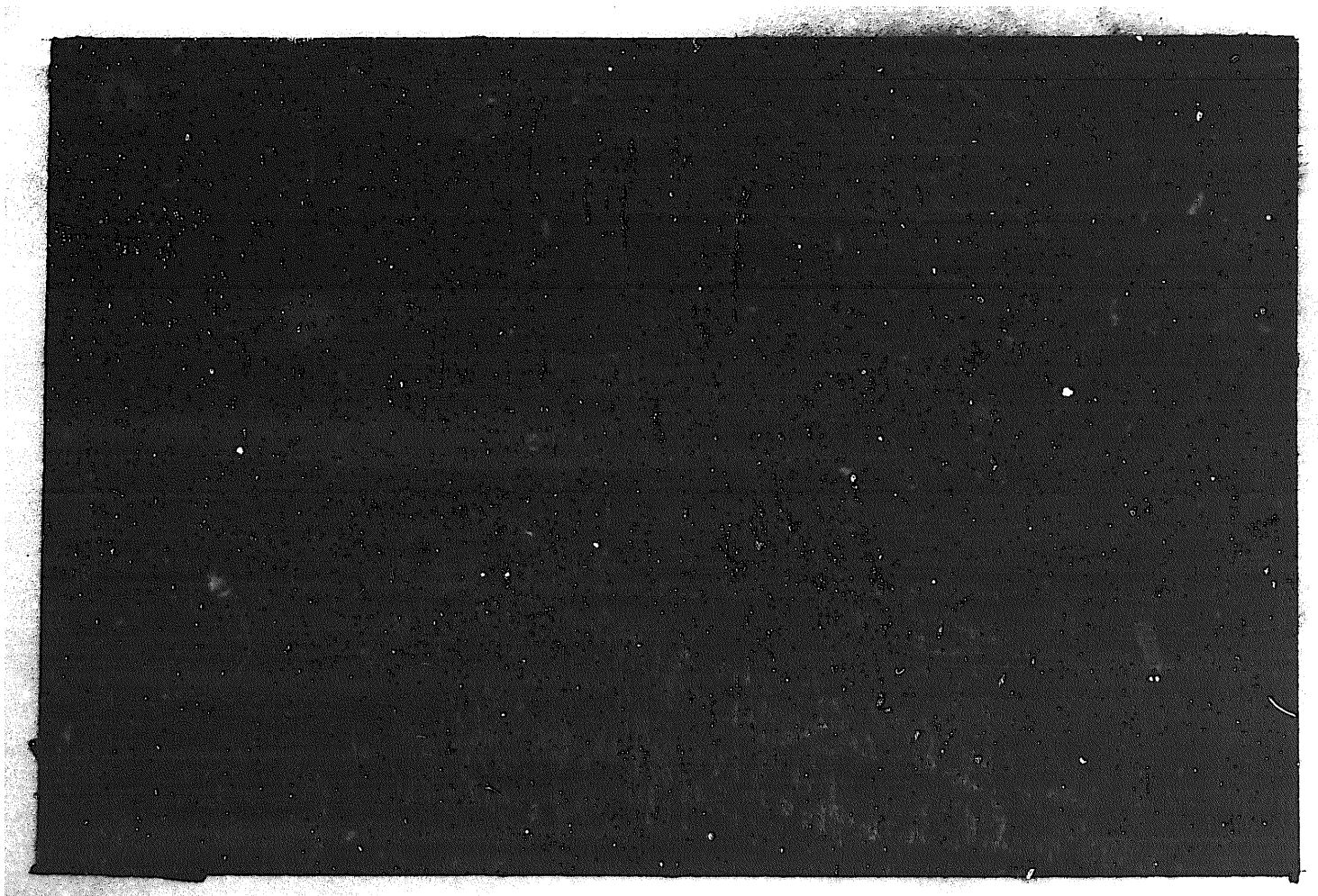


END

04-10-83

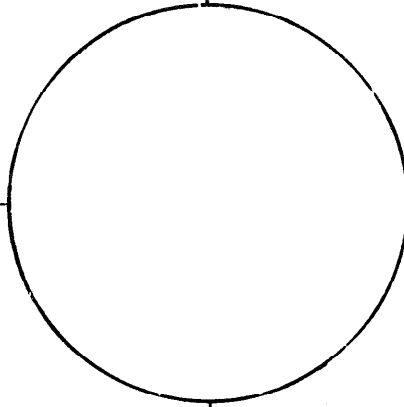
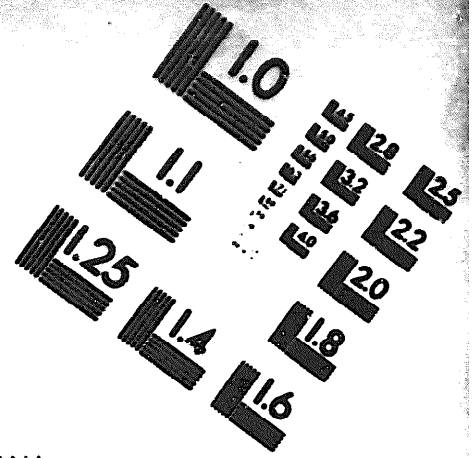
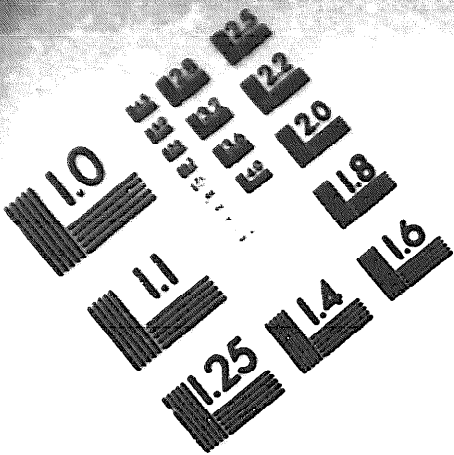
DATE





DEPARTMENT OF THE ARMY

MICROFORM TEST TARGET



150 MM

1.0 mm (e= .81 mm)

ABCDEFGHIJKLMN OPQRSTUVWXYZ 1234567890
abcdefghijklmnopqrstuvwxyz \$%&' /%# 1/2 1/4 3/4 —+ * & @ *

1.5 mm (e= 1.09 mm)

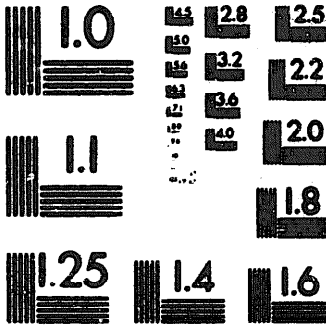
ABCDEFGHIJKLMN OPQRSTUVWXYZ 1234567890
abcdefghijklmnopqrstuvwxyz \$%&' /%# 1/2 1/4 3/4 —+ * & @ *

2.0 mm (e= 1.37 mm)

ABCDEFGHIJKLMN OPQRSTUVWXYZ
abcdefghijklmnopqrstuvwxyz
1234567890 \$%&' /%# 1/2 1/4 3/4 —+ * & @ *

2.5 mm (e= 1.77 mm)

ABCDEFGHIJKLMN OPQRSTUVWXYZ
abcdefghijklmnopqrstuvwxyz
1234567890 \$%&' /%# 1/2 1/4 3/4 —+ * & @ *



1.0 mm (e= .81 mm)

ABCDEFGHIJKLMN OPQRSTUVWXYZ 1234567890
abcdefghijklmnopqrstuvwxyz \$%&' /%# 1/2 1/4 3/4 —+ * & @ *

1.5 mm (e= 1.09 mm)

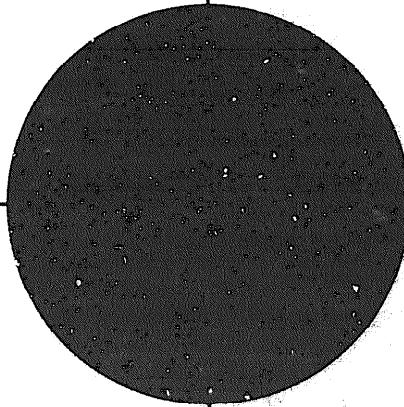
ABCDEFGHIJKLMN OPQRSTUVWXYZ 1234567890
abcdefghijklmnopqrstuvwxyz \$%&' /%# 1/2 1/4 3/4 —+ * & @ *

2.0 mm (e= 1.37 mm)

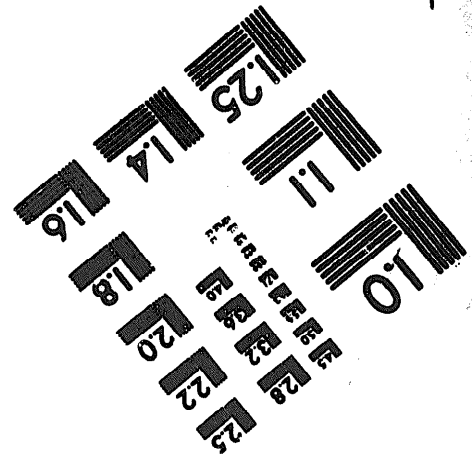
ABCDEFGHIJKLMN OPQRSTUVWXYZ
abcdefghijklmnopqrstuvwxyz
1234567890 \$%&' /%# 1/2 1/4 3/4 —+ * & @ *

2.5 mm (e= 1.77 mm)

ABCDEFGHIJKLMN OPQRSTUVWXYZ
abcdefghijklmnopqrstuvwxyz
1234567890 \$%&' /%# 1/2 1/4 3/4 —+ * & @ *



200 MM



250 MM